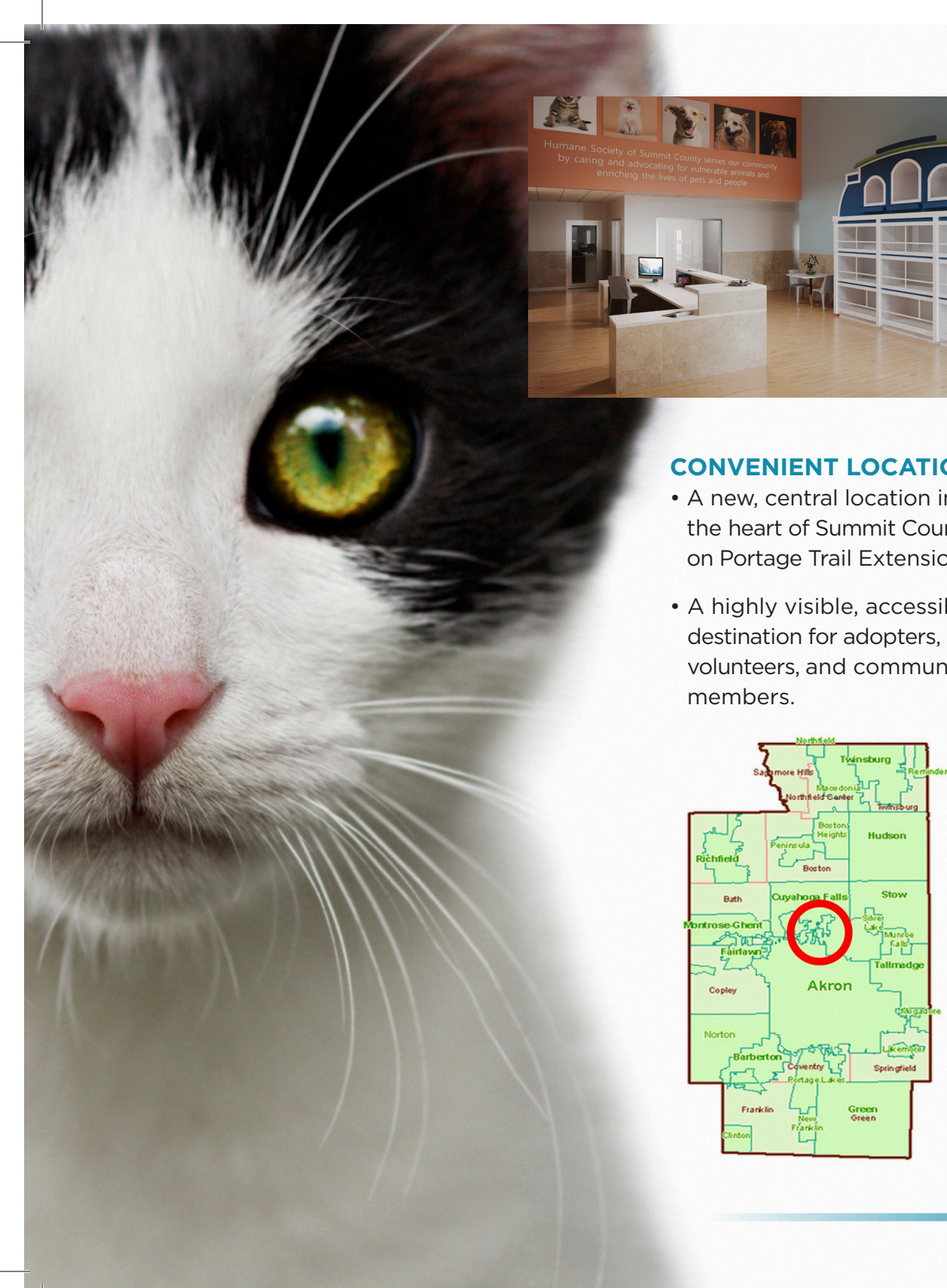




adopting
a better
future

A campaign to build a new home for the Humane Society of Summit County and create a bright future for animal welfare in our community.

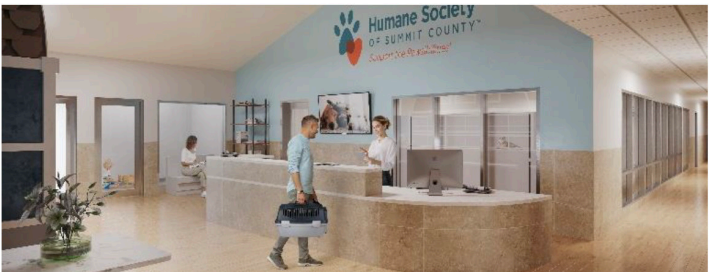




The Humane Society of Summit County is proudly embarking on a Capital Campaign to construct a new, purpose-built shelter that will revolutionize animal welfare in our community. The facility will help to serve animals and people in ways never before possible, making Summit County a more compassionate and humane community for animals and the people who care for them.

CONVENIENT LOCATION

- A new, central location in the heart of Summit County on Portage Trail Extension.
- A highly visible, accessible destination for adopters, volunteers, and community members.



A PURPOSE-BUILT CAMPUS

Right-sized facility and outbuildings economically uses indoor and outdoor space for animal housing, enrichment, veterinary care, and community programs.

STATE-OF-THE-ART SHELTERING

- Housing for up to 90 dogs and 140 cats simultaneously.
- Separate entrances for adopters and animal surrenders to better serve a variety of needs.
- Improved veterinary capacity to meet modern standards of care.
- Abundant natural light, specialized HVAC, and increased sanitization ability.
- Dedicated space for community programs, animal training, and enrichment.
- Better efficiency to improve stewardship of resources.

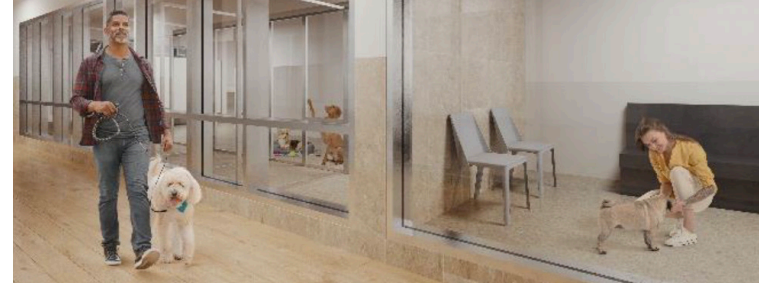


IMPACT ON ANIMALS

- Enclosures that reduce stress and protect health – thus reducing length of stay.
- Capacity to serve 30% more animals annually.

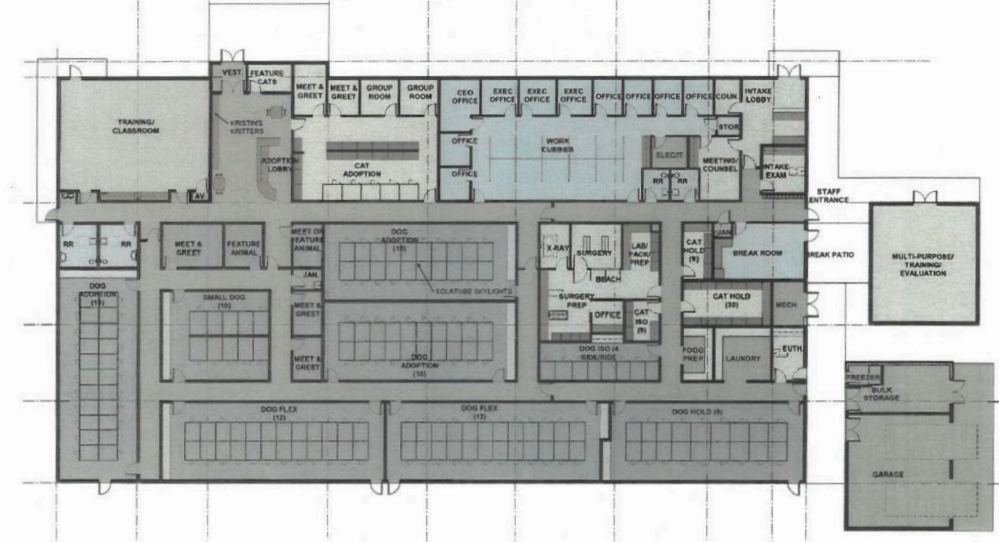
IMPACT ON THE COMMUNITY

- Environment that is welcoming and safe for staff, volunteers, and the community.
- A convenient, attractive destination for people to engage with rescued animals.
- A new depth of available programming that will aid with pet retention and educate on compassionate treatment of pets.



DRAFT FLOOR PLAN

Updated December 2021



DRAFT SITE PLAN

Updated March 2022



YOUR SUPPORT

A local, 501(c)3 nonprofit, The Humane Society of Summit County depends on the generous support of our community to save thousands of animals each year and provide them hope through adoption in keeping with our lifesaving mission.

The new Humane Society facility will be possible only through the investment of generous donors, like you.

Gifts of all sizes are gratefully accepted with giving terms of up to five (5) years.

Naming and other recognition opportunities are available for gifts of \$10,000 and more.

Together we are building a home of hope and healing and creating a community where animals can thrive.

adopting
a better
future

MORE INFORMATION

www.summithumane.org

Diane Johnson-Owens

President/CEO

djohnson@summithumane.org

(234) 212-9708

Louise DiLullo, MPA, CFRE

Director of Capital Campaign
and Major Gifts

ldilullo@summithumane.org

(234) 212-9749

